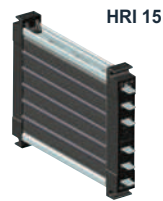
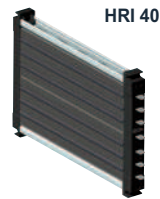
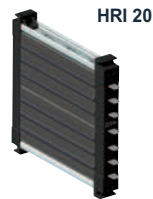


Finned Resistor Heaters Industry Design (HRI)



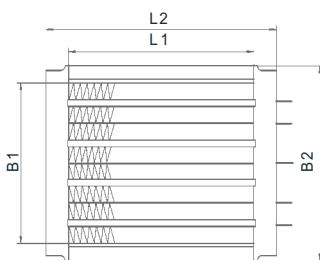
Type (Industry design HRI)		HRI 04 25/18	HRI 04 25/22	HRI 15 15/18	HRI 15 15/22	HRI 06 10/18	HRI 06 10/22
Rated voltage	V	230	230	230	230	230	230
Max. inrush current at 230V	A	16	16	8	8	7	7
Max. power output at 6 m/s	W	1900	2400	1050	1350	850	1100
Airflow at 6 m/s	V (m³/h)	195	195	125	125	130	130
Dimensions <i>Length1</i> x <i>Width1</i>	mm	150.6 x 73.8	150.6 x 73.8	96 x 73.8	96 x 73.8	150.6 x 46.4	150.6 x 46.4
Dimensions <i>Length2</i> x <i>Width2</i>	mm	—	—	—	—	174.6 x 64.4	174.6 x 64.4
Dimensions <i>Length2</i> x <i>Width3</i>	mm	174.6 x 100.5	174.6 x 100.5	120 x 100.5	120 x 100.5	174.6 x 70.5	174.6 x 70.5
Heating circuits		5	5	5	5	2	2
Differential pressure at 6 m/s	Pa	90	90	90	90	95	95



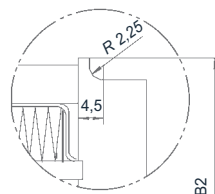
Type (Industry design HRI)		HRI 20 12/18	HRI 20 12/22	HRI 40 20/18	HRI 40 20/22
Rated voltage	V	230	230	230	230
Max. inrush current at 230V	A	8	8	14	14
Max. power output at 6 m/s	W	1150	1500	1700	2100
Airflow at 6 m/s	V (m³/h)	167	167	260	260
Dimensions <i>Length1</i> x <i>Width1</i>	mm	96 x 92.8	96 x 92.8	150.6 x 92.8	150.6 x 92.8
Dimensions <i>Length2</i> x <i>Width2</i>	mm	120 x 107.7	120 x 107.7	174.6 x 107.7	174.6 x 107.7
Dimensions <i>Length2</i> x <i>Width3</i>	mm	—	—	—	—
Heating circuits		4	4	4	4
Differential pressure at 6 m/s	Pa	80	80	90	90



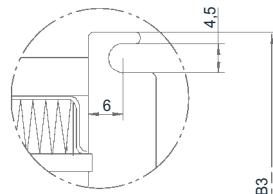
Option: Mounting frame with temperature-resistant plastic frame that safely holds the PTC heating element. Integrated temperature limiter possible. Customized design on request.



Industry design HRI



Housing version 1



Housing version 2

