

Einsatzbereich: - 623 Isolierkörper (16+3-polig)

Best.-Nr.: 61.152.11



Elektrische Werte

* Bemessungsstrom max. 7 A
Durchgangswiderstand < 5 mOhm

Werkstoffe

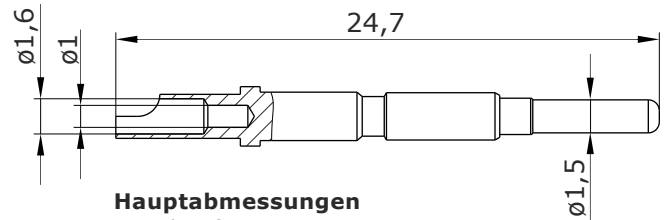
Kontakt Messing, vergoldet

Anschluss

Anschlussart lötl
Anschlussbereich 1,5 mm²
Abisolierlänge 7 mm
Litzendurchmesser max. $\varnothing 1,0$ mm

Mechanische Werte

Steckzyklen 500



Hauptabmessungen
Kontaktstift



for: - 623 Insulation Insert (16+3-pin)

order code: 61.152.11



Electrical Data

*rated current max. 7 A
contact resistance < 5 mOhm

Material

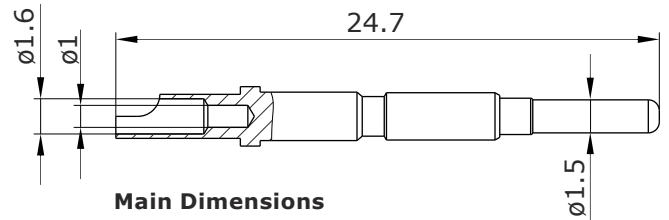
contact brass, gold plated

Termination

kind of termination solder
cross-section 1.5 mm²
stripping length 7 mm
wire diameter max. $\varnothing 1.0$ mm

Mechanical Data

mating cycles 500



Y6.E097.EN issue: 30.04.2013/MC

Copyright by INTERCONTEC Produkt GmbH, Germany.
All rights, including rights created by patent grant or registration
of a utility model or design, are reserved.
Noncompliance will result in seeking damages.

This document is for information only and before utilization
the user must reconfirm actuality.
Subject to technical changes.

INTERCONTEC Produkt GmbH
Bernrieder Str.: 15, 94559 Niederwinkling
Tel.: 09962/ 2002-0, Fax: 09962/ 2002-70
E-Mail: info@intercontec.biz
Web: www.intercontec.biz



* for max. wire cross-section