

Einsatzbereich: - alle 623 Isoierkörper,

Best.-Nr.: 61.006.11



Elektrische Daten

*Bemessungsstrom max. 10 A
Durchgangswiderstand < 5 mOhm

Werkstoffe

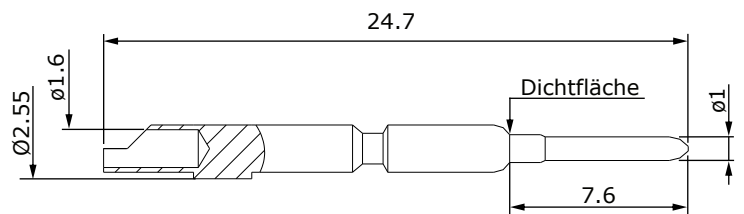
Kontakt Messing, vergoldet

Anschluß

Anschlußart löt
Anschlußbereich $1,0 - 1,5\text{mm}^2$
Abisolierlänge 5 mm

Mechanische Werte

Steckzyklen 500



Hauptabmessungen
Kontaktstift

for: - all 623 Insulation Insert

order code: 61.006.11



Technical Data

*rated current max. 10 Av
contact resistance < 5 mOhm

Material

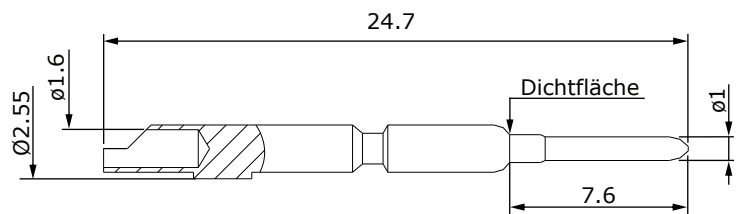
contact brass, gold plated

Termination

kind of termination solder
cross section 1,0 - 1,5mm²
stripping length 5 mm

Mechanical Data

mating cycles 500



Main Dimensions

contact pin

