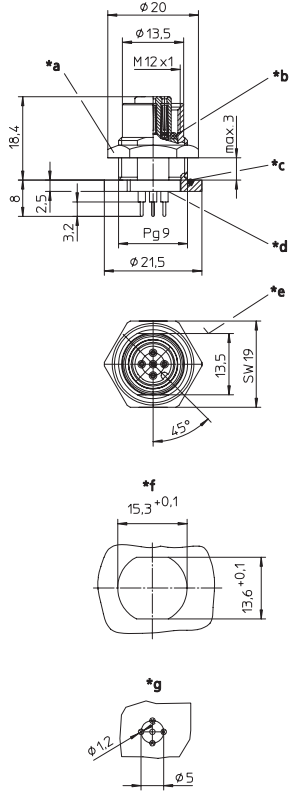


**RKHL /S 5,5**

**0986 EFC 152**

Einbausteckverbinder, M12-Kupplung für die Hinterwandmontage, Printkontakte, einbauseitig PG 9-Verschraubung (Befestigung über RSKF 9)  
0986 EFC 152: 4-polig, D-codiert

Receptacle connector, M12 female connector for rear mounting, printed contacts, chassis side thread PG 9 (panel nut RSKF 9)  
0986 EFC 152: 4 poles, D coding

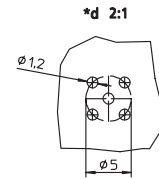
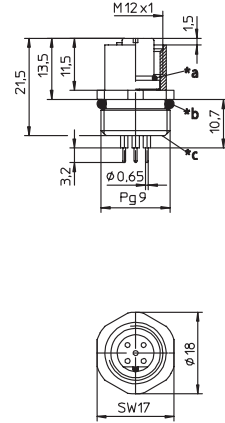


- \*a Mutter nut
- \*b O-Ring O-ring
- \*c O-Ring O-ring
- \*d Leiteranschlussbereich vergossen solder contacts potted with epoxy
- \*e Verdrehschutz anti-rotation protection
- \*f Einbauöffnung für Verdrehschutz cut out for anti-rotation
- \*g Lochbild in der Leiterplatte hole pattern in printed circuit board

**0976 PFC 152**

Einbausteckverbinder, M12-Kupplung für die Frontmontage, 5-polig, B-codiert, Printkontakte, einbauseitig PG 9-Verschraubung – besonders geeignet für Profibus –

Receptacle connector, M12 female connector for front mounting, 5 poles, B coding, printed contacts, chassis side thread PG 9 – especially suitable for Profibus –



- \*a O-Ring O-ring
- \*b O-Ring lose beige stellt O-ring loose enclosed
- \*c Leiteranschlussbereich vergossen solder contacts potted with epoxy
- \*d Lochbild in der Leiterplatte hole pattern in printed circuit board

**Pinbelegung  
Pin assignment**

**4-polig  
4 poles**



**4-polig D-codiert  
4 poles D coding**



**5-polig  
5 poles**



**5-polig B-codiert  
5 poles B coding**












**8-polig  
8 poles**



<b>Technische Daten</b>	
<b>Umgebungstemperatur</b>	RKHL: -25°C / +80°C 0986 EFC 152: -30°C / +80°C 0976 PFC 152: -25°C / +90°C
<b>Werkstoffe</b>	
Gehäuse / Griffkörper Kontaktträger	CuZn, vernickelt RKHL / 0986 EFC 152: PA 0976 PFC 152: TPU, selbstverlöschend
Kontakt	CuZn, unternickelt und 0,8 µm vergoldet
O-Ring	FKM
<b>Mechanische Daten</b>	
Schutzart	IP 67 Nur im verschraubten Zustand mit den dazugehörigen Gegenstücken.
Anschlussart	Printlötung
<b>Elektrische Daten</b>	
Durchgangswiderstand	≤ 5 mΩ
Nennstrom bei 40°C	4- bis 5-polig 4 A 8-polig 2 A
Nennspannung	RKHL / 0986 EFC 152: 4-polig 240 V; 5- bis 8-polig 60 V bei gekapseltem Einbau
Bemessungsspannung	0976 PFC 152: 30 V 4-polig 250 V; 5- bis 8-polig 63 V (nur RKHL / 0986 EFC 152)
Prüfspannung	4-polig 2,0 kV eff. / 60 s 5- bis 8-polig 1,5 kV eff. / 60 s
Isolationswiderstand	> 10 <sup>9</sup> Ω
Verschmutzungsgrad	3

<b>Technical data</b>	
<b>Operating temperature range</b>	RKHL: -25°C / +80°C 0986 EFC 152: -30°C / +80°C 0976 PFC 152: -25°C / +90°C
<b>Materials</b>	
Housing / Molded body Insert	CuZn, nickel-plated RKHL / 0986 EFC 152: PA 0976 PFC 152: TPU, self-extinguishing
Contact	CuZn, pre-nickel and 0.8 microns gold-plated
O-ring	FKM
<b>Mechanical data</b>	
Degree of protection	IP 67 Only in locked position with its proper counterparts. printed circuit board mount
Mode of connection	
<b>Electrical data</b>	
Contact resistance	≤ 5 mΩ
Nominal current at 40°C	4–5 poles 4 A 8 poles 2 A
Nominal voltage	RKHL / 0986 EFC 152: 4 poles 240 V; 5–8 poles 60 V encapsulated 0976 PFC 152: 30 V
Rated voltage	4 poles 250 V; 5–8 poles 63 V (only RKHL / 0986 EFC 152)
Test voltage	4 poles 2.0 kV eff. / 60 s 5–8 poles 1.5 kV eff. / 60 s
Insulation resistance	> 10 <sup>9</sup> Ω
Pollution degree	3

Bestellbezeichnung Designation	Polzahl Poles	
RKHL 4/S 5,5	4	 
0986 EFC 152	4D	
RKHL 5/S 5,5	5	 
RKHL 5B/S 5,5	5B	 
	0976 PFC 152	 
RKHL 8/S 5,5	8	