

### Single Port/Multi Port 658 / 6580

- Einlöt- oder SMT-Versionen
- 1 - 8 seitliche Eingänge
- auch mit LED-Signalleuchten in Farben gelb, grün, rot, bicolor
- voll geschirmt mit/ohne Erdungslasche

### Single Port/Multi Port 658 / 6580

- Solder-in oder SMT mounting
- 1 - 8 side entries
- LED optical indicators in colours yellow, green, red, bi-colour
- Fully shielded with optional ground latch

### Beschaltete Buchsen 655

- Single oder Multi Ports
- Gigabit Ethernet
- 10/100 Mbit Ethernet
- Übertragerschaltung und weitere Beschaltungen ...

### Jacks with built-in circuits 655

- Single or Multi Ports
- Gigabit Ethernet
- 10/100 Mbit Ethernet
- Transformer circuit and even more circuits ...

### M-Typ Top Entry 3018

- SMT-Technik
- Eingang von oben
- 6P6C / 8P8C

### M-Type Top Entry 3018

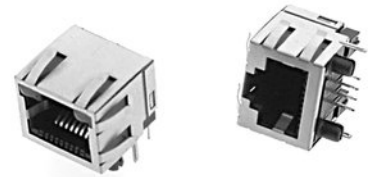
- SMT Connectors
- Top Entry
- 6P6C / 8P8C

### Weitere Varianten

- RJ-45 Keystone Jacks
- Up-Latch Varianten
- RJ-45 Combi Ports mit USB, eSata, ...
- Kabelkonfektionen
- Kundenspezifische Lösungen

### More Variations

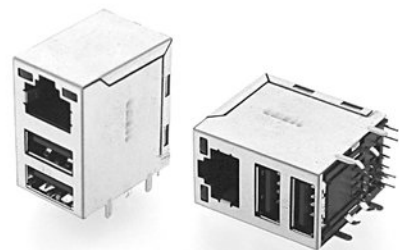
- RJ-45 Keystone Jacks
- Up-Latch Versions
- RJ-45 Combi Ports with USB, eSata, ...
- Cable Assemblies
- Customized Solutions



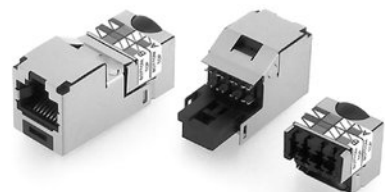
RJ-45 mit LED's, geschirmt  
RJ-45 with LED's, shielded



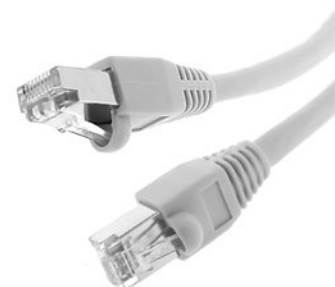
RJ-45 Multi Port  
RJ-45 Multi Port



RJ-45 Combi Port  
RJ-45 Combi Port



RJ-45 Keystone Jacks  
RJ45 Keystone Jacks



RJ-45 Kabelkonfektion  
RJ-45 Cable Assemblies