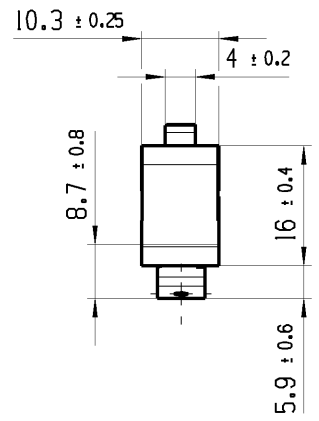
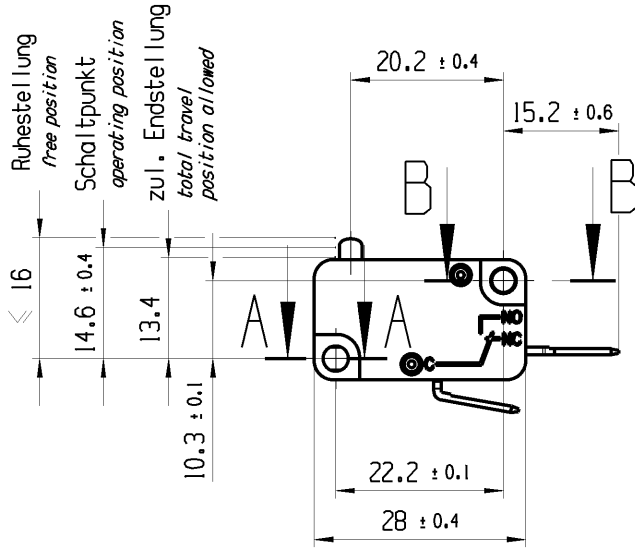


THIS DRAWING IS THE EXCLUSIVE PROPERTY OF MARQUARDT. WITHOUT THEIR CONSENT IT MAY NOT BE REPRODUCED OR GIVEN TO THIRD PARTIES.

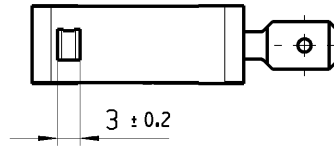
CONFIDENTIAL

VERTRAULICH

Alle Rechte bei Marquardt, auch fuer den Fall von Schutzrechtsverletzungen. Jede Verfertigungsbefugnis, wie Kopier- und Weitergaberecht, bei uns.



Flachstecker 6.3 x 0.8  
EN 61058 / EN 61210 / DIN 46244  
blade terminal 6.3 x 0.8  
EN 61058 / 61210 / DIN 46244



A-A  
2:1

B-B  
2:1

3.35 ± 0.05 x 3.08 ± 0.06

∅ 3.08 ± 0.06

Aufschrift  
marking



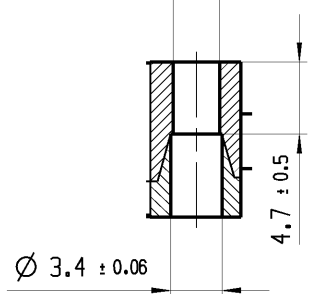
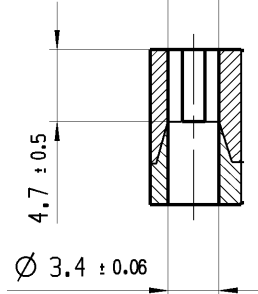
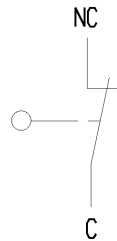
1005 T100

10(16) /250~50E3  05

10A 125V AC 1/2HP  
10A 250V AC 1/2HP

R10 

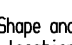
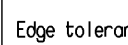
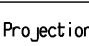

Herstellort /- jahr / -woche  
date code of manufacture:  
place / year / week



Offner 1-polig  
SPNC

Schalt-Betaetigungskraft 2.6 bis 4.2 N  
actuating force 2.6 up to 4.2 N

Differenzweg ≤ 1.0 mm  
movement differential

General tolerances				Sheet 01			Ident.	Document number	Index			
All dimensions are in millimetres	Shape and location 	Angle ± 2°	Edge tolerance 	Length	Radii	Format DIN A4	Projection 	Scale 1:1	K	10051105	e	
				0-6	± 0.1							± 0.2
				>6-15	± 0.15							± 0.3
				>15-30	± 0.2							± 0.5
				>30-70	± 0.3							
>70-120	± 0.4	± 10%										
>120	± 0.8											
e	109072	2017-08-16	TRIGUIK	System NX V10.0			 <b>MARQUARDT</b>					
d	83050	2014-06-13	BRC	Replacement of								
c	28755	1999-11-25	pFu	Zg.-gl.Nr.v.25.11.1999								
b	22163	1993-05-05	BLE									
Index	ECN-No.	Date (YYYY-MM-DD)	Edited by									