



MSW231A254W1AA3.0

Stepm 57mm,1,1Nm IP67, 3A,1m, 6,35mm



General information

Description	Stepm 57mm,1,1Nm IP67, 3A,1m, 6,35mm, MSW23157x57mm Holding Torque: 1.0 - 1.2 Nm , Driver 3.0A/phase. Motor 3Amp for 200step/rev. See driver technology for actual stepresolution. , ø6.35mm , High Torque, High Precision, PG16 and 1 m cable , None, No magnetic chip. Only specified if more to follow , 3.0 Ampere/phase		
Manufacture	JVL	Motor type	Stepper - Rotating
Color	Black	Motor resolution	
Holding torque [Nm]	1.1	Running torque [Nm]	1.1
Current per phase Serial/Parallel [A]	3.0	Speed [Rpm]	
Encoder type	-	Encoder [Counts/rev]	
Brake	No	Shaft Double	No
Flange Type Front		Protection house	IP67
Shaft size - Front [mm]	6.35	Protection shaft	IP67
CE Marked	Yes	Approval - ROHS-3	Yes
Approval - UL	No	Approval - ATEX	No
Country Of Origin	CN		



MSW231A254W1AA3.0

Stepm 57mm,1,1Nm IP67, 3A,1m, 6,35mm

Mechanical information

Ambient Temperature range:		Insulation Class	
Step Angle Accuracy of Full-Step		Step angle [°/full step]	1.8
Motor length [mm]	69	Motor width [mm]	60.5
Motor height [mm]	60.5		
Protection house	IP67	Protection shaft	IP67
Rotor inertia [kgcm²]	0.35	Precision Motor - Repeatability [Deg]	
Precision Motor - Max Load [Deg]		Precision Motor - Absolute [Deg]	
Flange Type Front		Flange Rear	
Bolt circle diameter front [mm]	66.67		
Motor diameter center front [mm]	38.1		
Mounting holes front [mm]			
Shaft size - Front [mm]	6.35	Shaft size - Rear	-
Shaft Type Output	D-cut	Shaft Type Rear	-
Shaft length Front [mm]	20.6	Shaft length Rear [mm]	-
Front bearing type	608ZZ	Rear bearing type	608ZZ
Flange material		Shaft material	Stainless steel SUS303/EN 1.4305/AISI303
Shaft Key included	No keyway in shaft	Shaft Key Dimension	-
Radial load [N]	55	Radial load distance [mm]	20
Axial load [N]	12	Axial play [mm]	0.075
Axial play force [N]		Oil resistant	
Brake	No	Brake - Go ON time [ms]	-
Brake Holding torque [Nm]	-	Brake - Go OFF time [ms]	-
Abs. Encoder multiturn Resolution	-	Abs. Enc. Battery	No
Abs. Enc. Interface		Abs. Enc. Latency	-
Abs. Encoder input voltage		Abs. Enc. Max Velocity	-
Abs. Enc. output voltage level			
Weight net [kg]	0.90	Weight gross [kg]	0.90
Datasheet - pdf	-	User Manual	
WEB page	Yes		
CAD 2D [PDF]		CAD 3D [STEP]	
CAD file page			



JVL A/S | Bregnerødvej 127 | DK-3460 Birkerød | Denmark | Tel. (+45) 4582 4440 | www.jvl.dk | sales@jvl.dk

MSW231A254W1AA3.0

Stepm 57mm,1,1Nm IP67, 3A,1m, 6,35mm

Mechanical information

Temperature ambient

[°C]

Temperature storage

Humidity working

-

Shock

Withstand Voltage

Vibration

EMC in general

EMC Emission

EMC Immunity

Inviromental

Tariff no

85011091

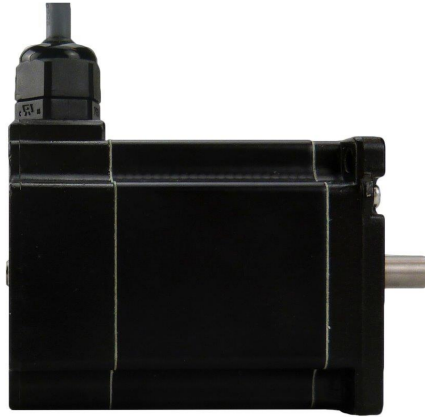


MSW231A254W1AA3.0

Stepm 57mm,1,1Nm IP67, 3A,1m, 6,35mm

Connector information

Motor connectors



Connector Motor PG16 + Cable 1m free end

Connector Encoder -

Connector Brake No

Cable length
[m]

Cable material

Cable flexibility

Cable min/max temp.
[°C]

Encoder Cable color coding



MSW231A254W1AA3.0

Stepm 57mm,1,1Nm IP67, 3A,1m, 6,35mm

Torque, force and Power information

Supply Volt 1
[V]

Power Peak 1
[W]

Supply Volt 2
[V]

Power Peak 2
[W]

Supply Volt 3
[V]

Power Peak 3
[W]

Supply Volt 4
[V]

Power Peak 4
[W]

Holding torque 1.1
[Nm]

Running torque 1.1
[Nm]

Detent torque
[Nm]



MSW231A254W1AA3.0

Stepm 57mm,1,1Nm IP67, 3A,1m, 6,35mm

Electrical information

Driver Voltage max [VDC]		Motor resolution	
No of phases	2	Resistance [Ohm]	
Motor induction [mH]		Rated voltage	[V]
Current per phase Serial/Parallel [A]	3.0	Motor current RMS/Peak [A]	
		Encoder type	-
Encoder type and resolution	-	Encoder revolutions	-
Encoder [Counts/rev]			