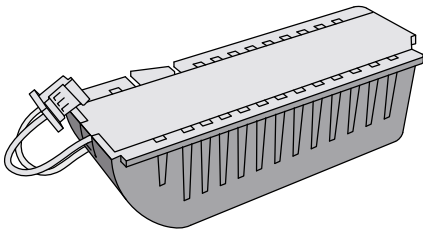


■ Buffer Battery



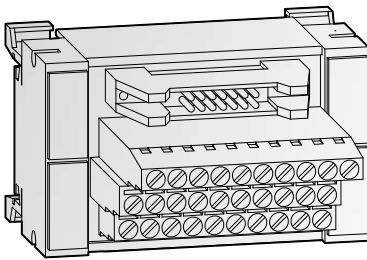
The servomotor's absolute value can be maintained by mounting the MR-BAT6V1SET(-A) battery on the servo amplifier. The battery is not required when the servo system is used in incremental mode.

Battery	MR-BAT6V1SET	MR-BAT6V1SET-A
Application	Buffering absolute positioning data for MR-J4-A/B	Buffering absolute positioning data for MR-JE-B/MR-J4-GF/MR-J4-TM
Order information	Art. no. 248691	281981

4

Options and Peripheral Equipment

■ Terminal Blocks

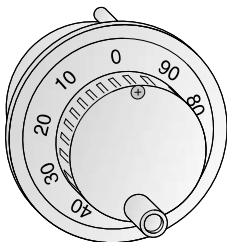


These terminal blocks TB-20-EG, TB-26-EG and TB-50-EG are adapter modules that simplify the wiring of the inputs and outputs of the servo

amplifiers. In addition preconfigured system cabling is available for all of these terminal blocks.

Specifications	TB-20-EG	TB-26-EG	TB-50-EG
Terminal block type	Input/output block	Input/output block	Input/output block
Channels	8/16	26	50
Design	20 pin terminal module	26 pin terminal module	50 pin terminal module
Connection type	Screw terminals	Screw terminals	Screw terminals
Application	Servoamplifier MR-JE-B/ MR-J4-B/MR-J4-GF/MR-J4-TM	Servoamplifier MR-J4W2-B/ MR-J4W3-B Motion controller Q170MSCPU	Servoamplifier MR-J4-A/ MR-JE-A Motion controller MR-MQ100
Dimensions (WxHxD)	mm 75x45x52	73x81x58	102x81x80
Order information	Art. no. 212032	215134	212033
Connection cables	MR-J3TBL-CN3-05M-EG; length 0.5 m; Art. no.: 212096, MR-J3TBL-CN3-1M-EG; length 1 m; Art. no.: 212095	MR-ESTBL-CN1-05M-EG; length 0.5 m; Art. no.: 215135 MR-ESTBL-CN1-1M-EG; length 1 m; Art. no.: 215137	MR-J2M-CN1TBL05M; length 0.5 m; Art. no.: 146794 MR-J2M-CN1TBL1M; length 1 m; Art. no.: 189864

■ Manual Pulse Generator



MR-HDP01

By this serial handwheel an external incremental setting value can be generated.

Specifications	MR-HDP01
Resolution	25 pls/rev (100 pls/rev at magnification of 4)
Output voltage	Input voltage > 1V
Consumption current	Max. 60 mA
Weight	kg 0.4
Order information	Art. no. 128728