

## Before Using the Product

Before using the product, please read this manual. Make sure that the end users read this manual and then keep the manual in a safe place for future reference.

### ■ Relevant manuals

Before using the product, please read the Safety Guidelines included with the CPU module or base unit used, especially the following sections.

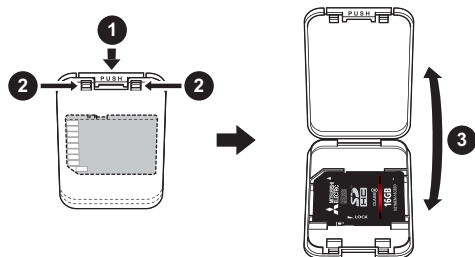
- SAFETY PRECAUTIONS
- CONDITIONS OF USE FOR THE PRODUCT
- EMC AND LOW VOLTAGE DIRECTIVES
- WARRANTY

### ■ Packing list

Check that the following items are included in the package of the product.

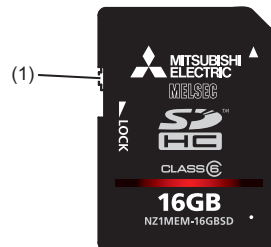
Item	Quantity
SD memory card	1
Before Using the Product (this manual)	1
Supplementary document to the manual Compliant with Chinese RoHS (产品名)IC 卡的基于「电子信息产品污染控制标识要求」的表示)	1

### ■ How to open the case



- ① Press the "PUSH" part.
- ② The latches are detached as long as pressing the part.
- ③ Keep pressing and open the case.

### ■ Part names



Number	Name	Application
(1)	Write protect switch	A switch that disables deleting data from or overwriting data to the SD memory card (Set the switch to the LOCK position.)

### ■ Specifications

Item	NZ1MEM-2GBSD	NZ1MEM-4GBSD	NZ1MEM-8GBSD	NZ1MEM-16GBSD
SD memory card type	SD memory card		SDHC memory card	
Memory capacity	2G bytes	4G bytes	8G bytes	16G bytes
Number of writings	60000 times		100000 times	
External dimensions	H	32mm		
	W	24mm		
	D	2.1mm		
Weight	2g			

### ■ Operating ambient temperature

Use the product within the range of 0 to 55°C.

### ■ Information and services

For further information and services, please consult your local Mitsubishi representative.

### ■ Trademarks

The SD and SDHC logos are either registered trademarks or trademarks of SD-3C, LLC. All other company names and product names used in this manual are either trademarks or registered trademarks of their respective companies.

