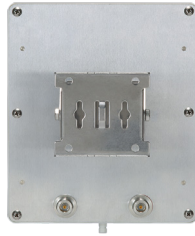


MAT-WDB-PA-NF-2-0708

**MIMO 2x2, 2.4/5 GHz, dual-band panel antenna, 7/8 dBi,
N-type (female)**



Front Panel



Back Panel

- > Lightweight
- > Compact form factor
- > Pole-mounting support
- > -40 to 75°C operating temperature range

: Specifications

Antenna Characteristics

Frequency: 2.4 to 2.5 GHz, 4.9 to 5.9 GHz
Antenna Type: Directional panel-type
Typical Antenna Gain: 7/8 dBi
Connector: N-type (female)
Impedance: 50 ohms
Polarization: Vertical
HPBW/horizontal: 90°
HPBW/vertical: 50°
V.S.W.R.: 2 max.
Power Handling: 2 W max.

Physical Characteristics

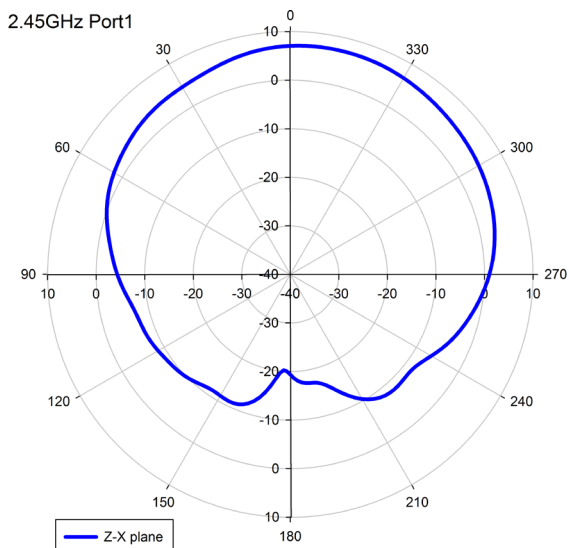
Weight: 935 g
Dimensions:
 206 x 177 x 45 mm
Radome Color: White
Radome Material: ABS

Environmental Limits

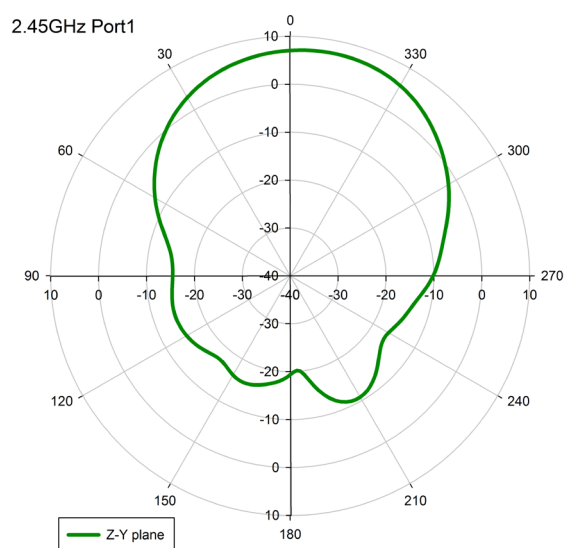
Operating Temperature: -40 to 75°C (-40 to 167°F)
Storage Temperature: -40 to 75°C (-40 to 167°F)
Ambient Relative Humidity: 5 to 95% (30°C, non-condensing)

: Field Patterns

Z-X Plane

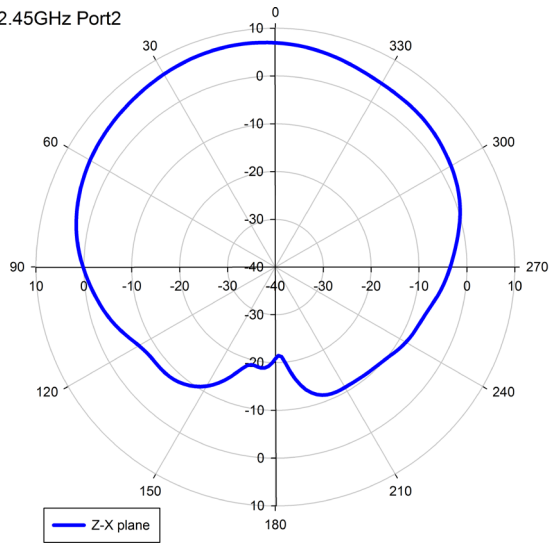


Z-Y Plane



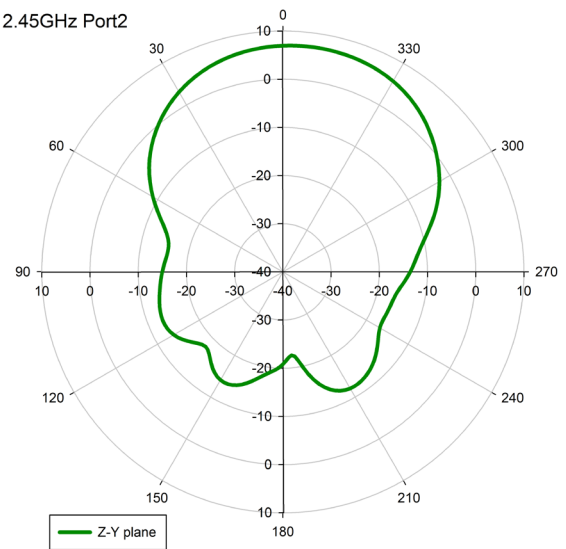
Z-X Plane

2.45GHz Port2

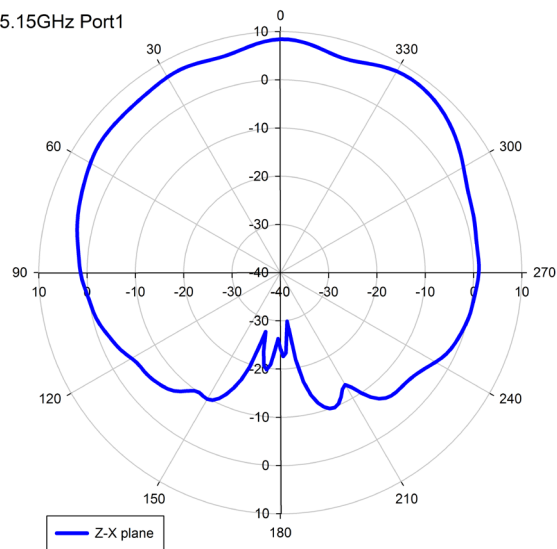


Z-Y Plane

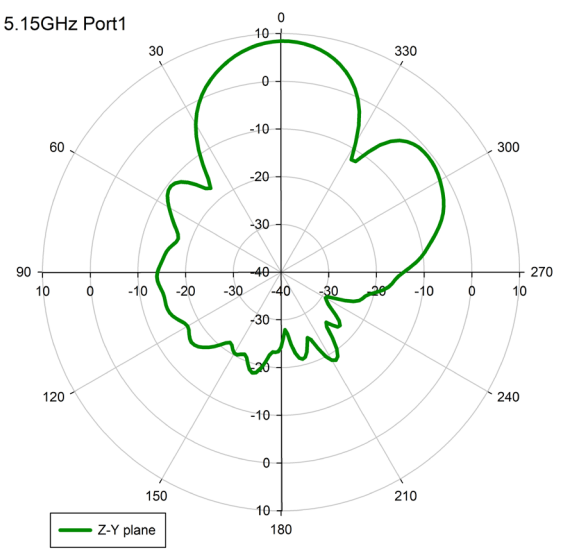
2.45GHz Port2



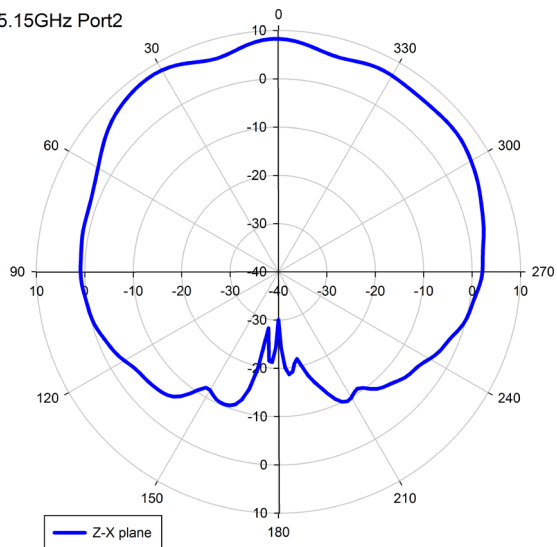
5.15GHz Port1



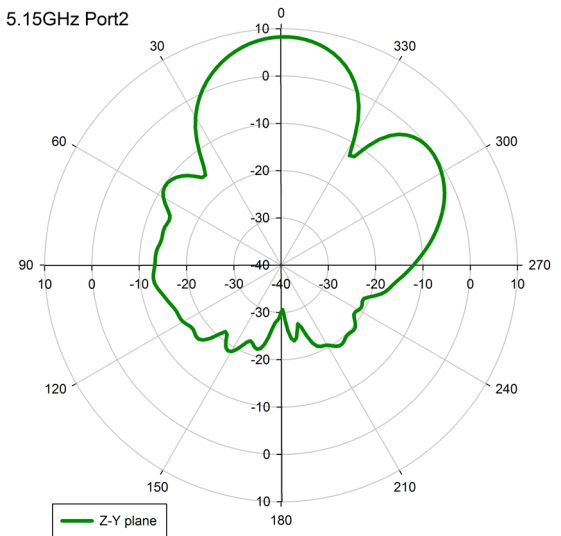
5.15GHz Port1



5.15GHz Port2

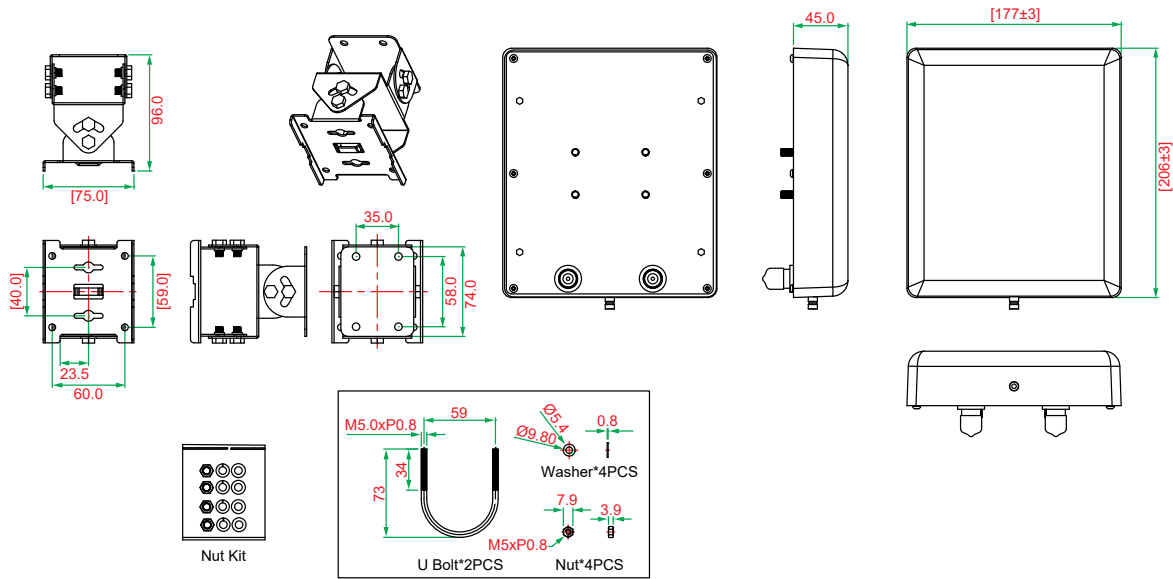


5.15GHz Port2



Dimensions

Unit: mm



Ordering Information

Available Models

MAT-WDB-PA-NF-2-0708: MIMO 2x2, 2.4/5 GHz, dual-band panel antenna, 7/8 dBi, N-type (female)

Can be used with the following products

AWK Series: AWK-4131A